

JK HEAT PLUS

JK BROODER

JK LL^oDUS

JK LAMP STAND

JK Lighting Korea

2546, Nambuk-daero, Idong-eup, Cheoin-gu,
Yongin-si, Gyeonggi-do, Korea 17137
Tel: +82-31-336-1492 Fax: +82-31-336-1258
www.jklight.com / info@jklight.com



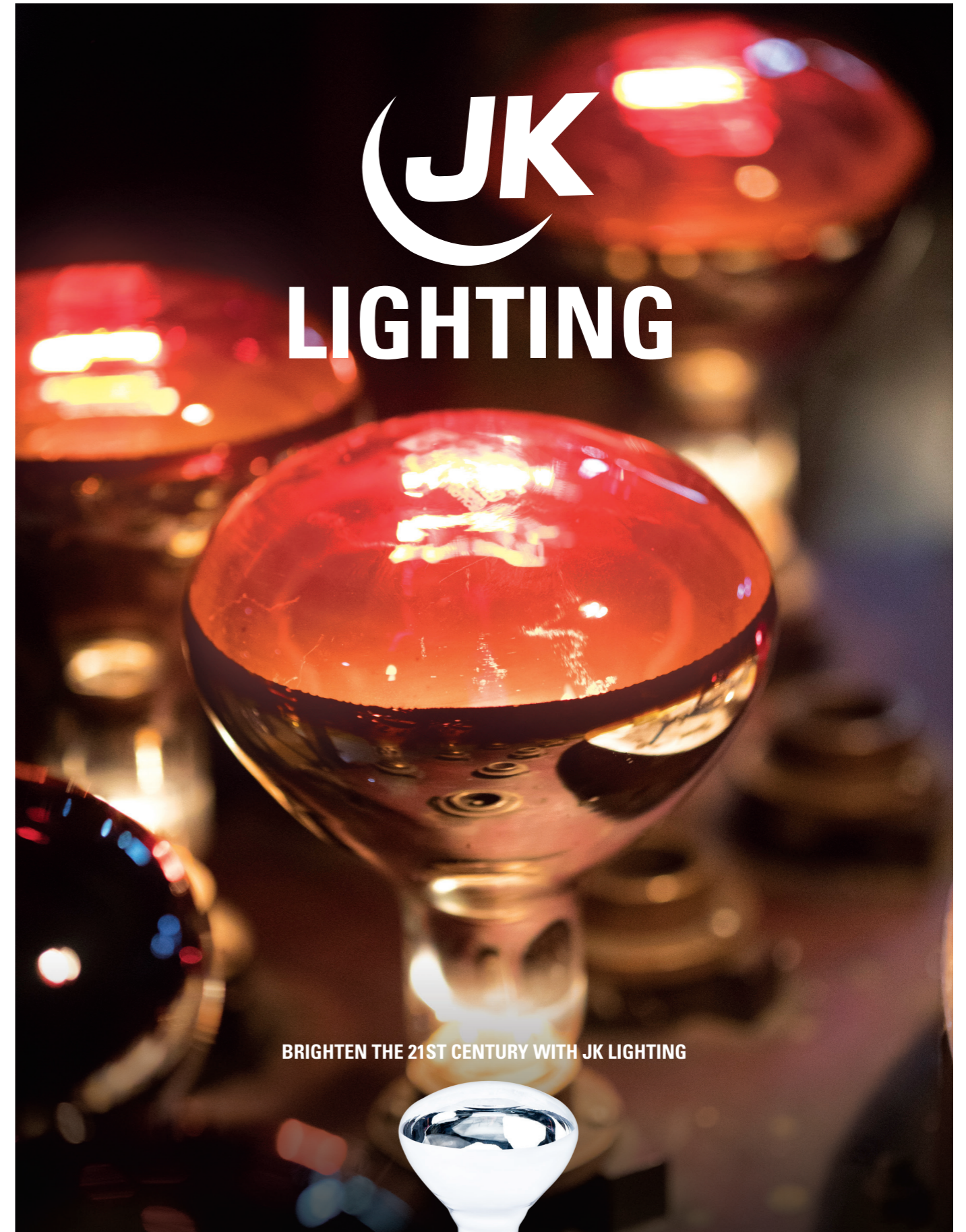
HOMEPAGE



FACEBOOK

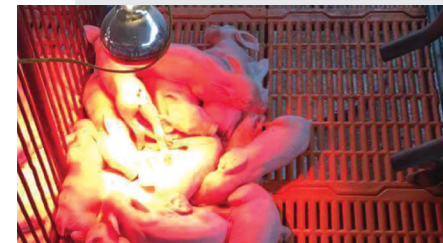


YOUTUBE



BRIGHTEN THE 21ST CENTURY WITH JK LIGHTING

INFRARED HEAT BULB



FEATURE

- Fade resistant ruby stained red
- Specially designed filament
- More heat less light (high heat output)
- Moisture proof (Hard glass)
- Screwed glass & Ni coated copper base

APPLICATION

- Therapeutic and other medical purpose
- Bathroom, food and healthy purpose
- Pig, Chicks, and animal farming

TYPE

- R40/R125/IR (Clear)
- R40/R125/IR (Lacquered red)
- R40/R125/IR (Ruby stained red)



PRODUCT	CODE	DESCRIPTION	V	W	LIFE (HR)	SOCKET	DIMENSION	
							DIA.	MOL
BR125	135241	100BR125/IR/CH	220/240	100	5000	E27	125	180
	134100	100BR125/IR/RH	220/240	100	5000	E27	125	180
	135261	150BR125/IR/CH	220/240	150	5000	E27	125	180
	135262	150BR125/IR/RH	220/240	150	5000	E27	125	180
	184520	175BR125/IR/CH	220/240	175	5000	E27	125	180
	134173	175BR125/IR/RH	220/240	175	5000	E27	125	180
	135461	250BR125/IR/CH	220/240	250	5000	E27	125	180
	135462	250BR125/IR/RH	220/240	250	5000	E27	125	180
	136111	275BR125/IR/CH	220/240	275	5000	E27	125	180
	136113	275BR125/IR/RH	220/240	275	5000	E27	125	180
R125	184176	150R125/IR/Ruby	220/240	150	5000	E27	125	180
	184174	250R125/IR/Ruby	220/240	250	5000	E27	125	180
	184370	300R125/IR/CH	220/240	300	5000	E27	125	180
	184470	375R125/IR/CH	220/240	375	5000	E27	125	180
	184474	375R125/IR/Ruby	220/240	375	5000	E27	125	180
BR40	135240	100BR40/IR/CH	120/130	100	5000	E26	125	175
	135242	100BR40/IR/RH	120/130	100	5000	E26	125	175
	135260	125BR40/IR/CH	120/130	125	5000	E26	125	175
	135268	150BR40/IR/CH	120/130	150	5000	E26	125	175
	135269	150BR40/IR/RH	120/130	150	5000	E26	125	175
	135325	175BR40/IR/CH	120/130	175	5000	E26	125	175
	134174	175BR40/IR/RH	120/130	175	5000	E26	125	175
	135460	250BR40/IR/CH	120/130	250	5000	E26	125	175
	174172	250BR40/IR/RH	120/130	250	5000	E26	125	175
	R40	135494	250R40/IR/Ruby	120/130	250	5000	E26	125
184471		375R40/IR/CH	120/130	375	5000	E26	125	175
184474		375R40/IR/Ruby	120/130	375	5000	E26	125	175



INFRARED HEAT BULB

PAR38/IR/CLEAR



PAR38/IR/RED



PAR38/IR/RUBY



FEATURE

- Hard glass
- Lighter weight than conventional two piece PAR38
- Reinforced rim bulb-shaped (Patented #168357)

APPLICATION

- Therapeutic and other medical purpose
- Bathroom, food and healthy purpose
- Pig, chicks, animal farming and other industrial purpose

TYPE

- PAR38

BENEFIT

- Screwed base
- Moisture proof

PRODUCT	CODE	DESCRIPTION	V	W	LIFE (HR)	SOCKET	DIMENSION	
							DIA.	MOL
PAR38	145120	100PAR38/IR/CH	120/130	100	5000	E26	120	150
	145124	100PAR38/IR/RH	120/130	100	5000	E26	120	150
	145211	125PAR38/IR/CH	120/130	100	5000	E26	120	150
	145251	150PAR38/IR/CH	120/130	150	5000	E26	120	150
	145255	150PAR38/IR/RH	120/130	150	5000	E26	120	150
	145253	150PAR38/IR/Ruby	120/130	150	5000	E26	120	150
	145320	175PAR38/IR/CH	120/130	175	5000	E26	120	150
	145321	175PAR38/IR/RH	120/130	175	5000	E26	120	150
	145323	175PAR38/IR/Ruby	120/130	175	5000	E26	120	150
PAR38	145121	100PAR38/IR/CH	220/240	100	5000	E27	120	150
	145125	100PAR38/IR/RH	220/240	100	5000	E27	120	150
	145123	100PAR38/IR/Ruby	220/240	100	5000	E27	120	150
	145252	150PAR38/IR/CH	220/240	150	5000	E27	120	150
	145256	150PAR38/IR/RH	220/240	150	5000	E27	120	150
	145254	150PAR38/IR/Ruby	220/240	150	5000	E27	120	150
	145322	175PAR38/IR/CH	220/240	175	5000	E27	120	150
	145325	175PAR38/IR/RH	220/240	175	5000	E27	120	150
	145324	175PAR38/IR/Ruby	220/240	175	5000	E27	120	150



LAMP PROTECTOR BROODER LAMP

JKBL 210



JKBL 300



JKBL 450



FEATURE

- Sturdy bulb guard protects from animal
- Heavy gauge stainless steel base
- Gold aluminum anodizing finished
- Porcelain socket and 10 inch cord
- Use 100V ~ 250 Volt and 100W ~ 375 Watt range
- 3 way switch
- Box of 10
- Separate hunger clip and hanger attaches to the lamp holder

APPLICATION

- Chicks/Pig/Animal habitats

TYPE

- JKBL210/300/450

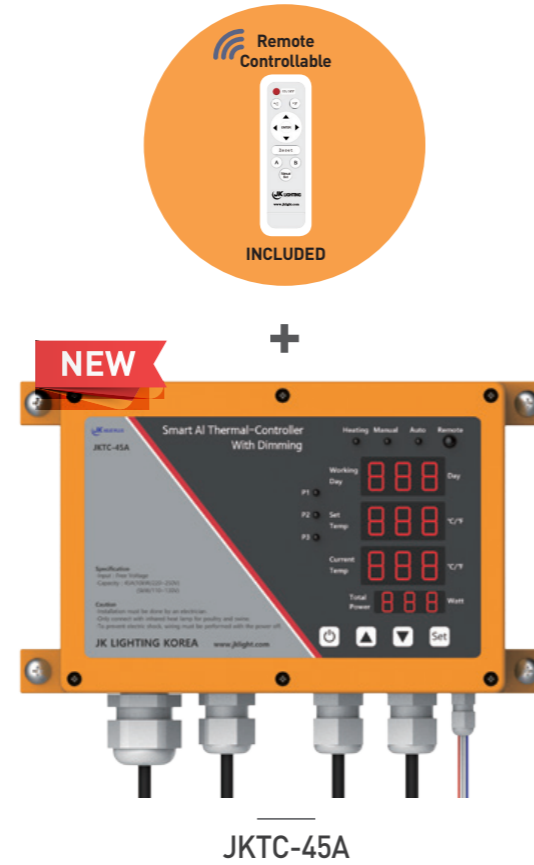
BENEFIT

- Water resistance
- Maximize heat release

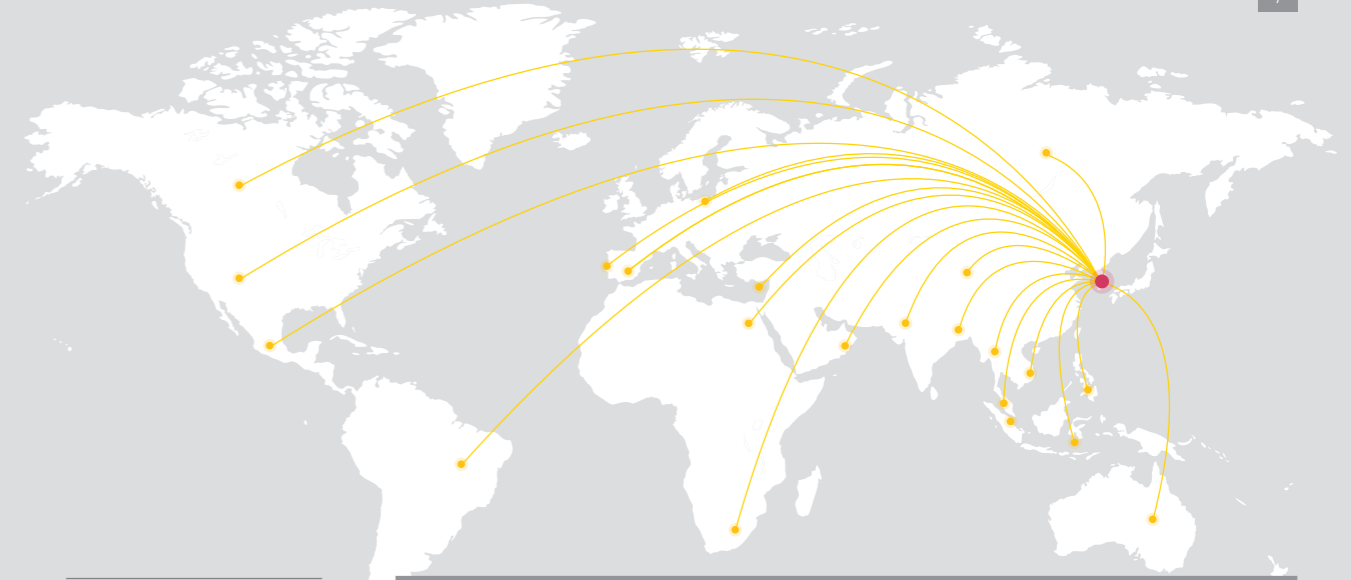
TYPE	CODE	MODEL	SWITCH (H-M-L)	WIRE CODE(M)	CHAIN LENGTH(M)	SOCKET	DIMENSION	
							DIA.	MOL
BL	211001-001	JKBL210	3 way	2.0	2.0	E26	210	320
	211001-002	JKBL210	3 way	2.0	2.0	E27	210	320
	221001-001	JKBL300	3 way	2.0	2.0	E26	300	330
	221001-002	JKBL300	3 way	2.0	2.0	E27	300	330
	241001-000	JKBL450	on-off	2.3	2.0	E26/E27	450	330

Multiple Temperature Controller

Description	
CLASSIFICATION	SPECIFICATION
FREQUENCY	50/60HZ
ALLOWABLE CURRENT	45A
	220V~250V : 10Kw
	110V~130V : 5Kw
TEMP. SET RANGE	1°C ~ 65°C
	Default as 50% (adjustable)
CONNECTING CABLE	Input : 8mm ² Output : 2.5mm ²
PRODUCT SIZE	260(L) x 80(W) x 100(H) mm
GROSS WEIGHT	1.2Kg
COMPONENTS	JKTC-45A User Guide Thermal Sensor Cable



Setting Days & Temperatures
Automatic power consumption
Save Energy Cost & Labor Cost



EXPORTS TO WORLDWIDE

Asian

- Korea
- China
- Taiwan
- Hong Kong
- Singapore
- Vietnam
- Thailand
- Philippines
- Bangladesh
- India
- Pakistan

Europe

- Poland
- Spain
- Russia
- Netherlands
- Germany
- Slovenia
- UK
- Cyprus

America

- USA
- Canada
- Brazil
- Mexico
- Peru
- Oceania**
- Australia

Middle East

- UAE
- Kuwait

Africa

- Egypt
- South Africa
- Ethiopia

CERTIFIED



Single Temperature Controller



BL-210BT

